

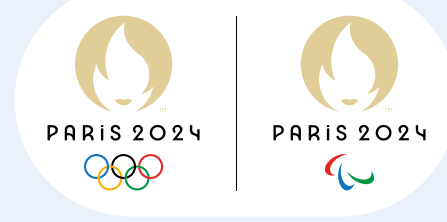


**PRÉFECTURE
DE POLICE**

Liberté
Égalité
Fraternité

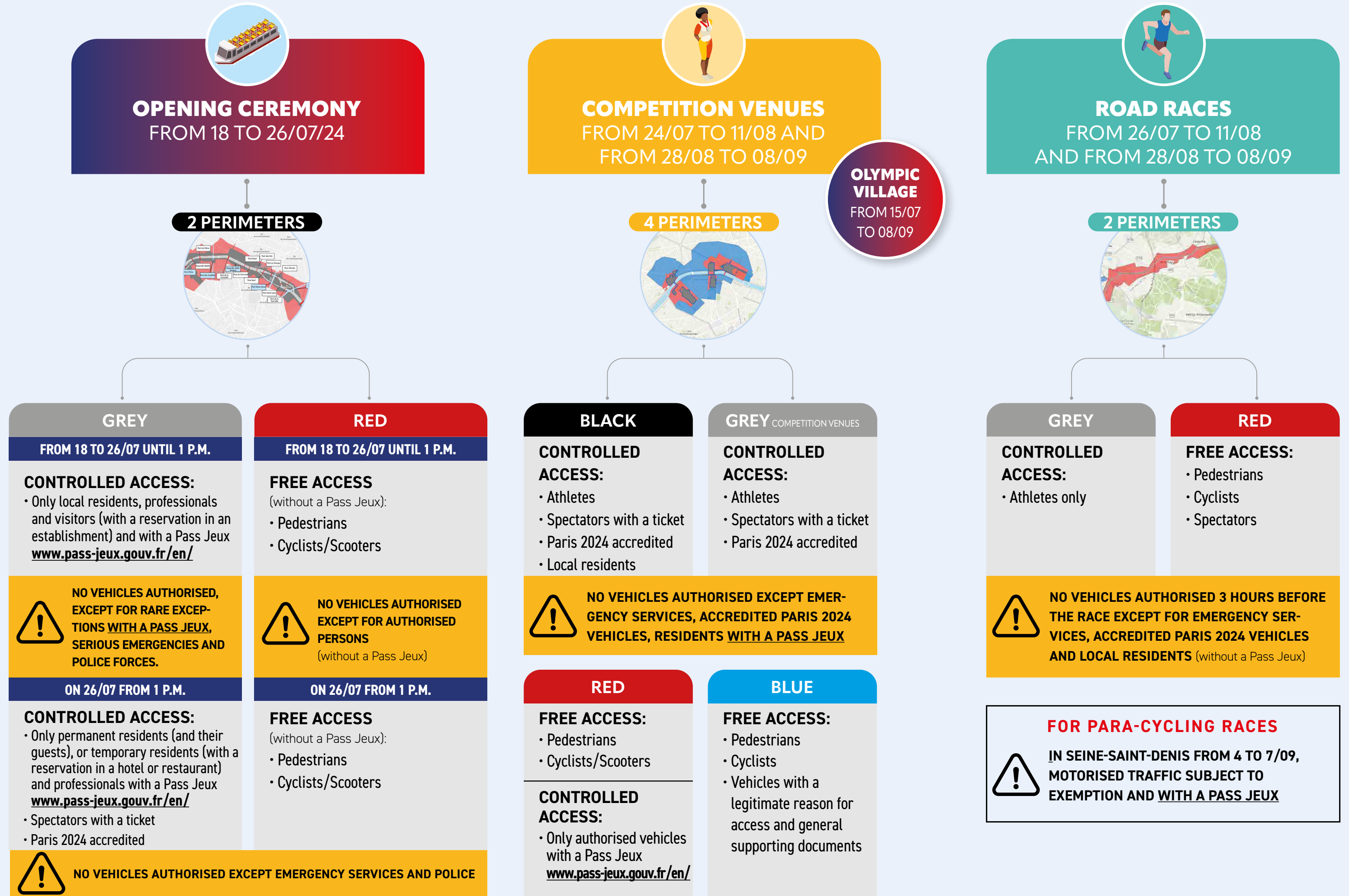


PAYS HÔTE



PASS JEUX INFO

TRAFFIC RULES *at a glance*



1-Check **IF YOU NEED** A PASS JEUX

> IF YOU ARE ON FOOT OR BY BIKE, CARGO BIKE OR SCOOTER

NO FREE ACCESS WITHOUT A PASS JEUX

- to access the red perimeters around the opening ceremony, the Olympic and Paralympic venues and the road races
- to access the blue perimeters around the Olympic and Paralympic venues
- to circulate outside the perimeters



YES CONTROLLED ACCESS WITH A PASS JEUX

- only for local residents, professionals and visitors (with a reservation in an establishment), within the grey perimeter around the opening ceremony, from 18 to 26 July included.

On 26 July, access without a Pass Jeux for spectators with a ticket or access card and for Paris2024 accredited persons

> IF YOU HAVE A MOTORISED VEHICLE: 2-WHEELER, CAR, CAB, VTC, COMMERCIAL VEHICLE, ETC.

NO FREE ACCESS WITHOUT A PASS JEUX

- to circulate outside the perimeters

NO RESTRICTED ACCESS WITHOUT A PASS JEUX

- to access the blue perimeters around the Olympic and Paralympic venues on presentation of proof



YES CONTROLLED ACCESS WITH A PASS JEUX FOR AUTHORISED PERSONS ONLY. Refer to the table of authorised persons on www.pass-jeux.gouv.fr/en/

For persons authorised to access the perimeters around the **OPENING CEREMONY**
grey perimeter = WITH A PASS JEUX
red perimeter = WITHOUT A PASS JEUX

For persons authorised to access the perimeters around the **OLYMPIC AND PARALYMPIC VENUES**
red perimeter = WITH A PASS JEUX

2-Apply for **THE PASS JEUX** ON WWW.PASS-JEUX.GOUV.FR/EN/



All the information on:

→ Perimeters and table of authorised persons: www.securite-jeux2024.fr

→ Interactive map to help you plan your travels on: www.anticiperlesjeux.gouv.fr/en/